



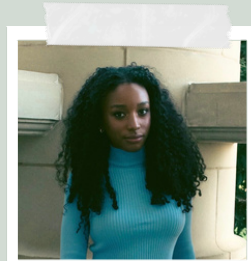
NEWSLETTER

ISSUE 1
JANUARY 12-31

NINER CHOICE TASKFORCE SPOTLIGHT

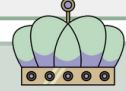
Meet Jiya!

Jiya is a sophomore at UNC Charlotte majoring in Marketing with a Minor in Psychology. She currently serves as the Student Coordinator for Off-Campus Student Services, where she supports students with Niner Choice resources, housing inquiries, and educational programming.



Jiya Heath

offcampushousing.charlotte.edu



UPCOMING EVENTS

01/12

First Day of Classes

02/03

Off-Campus Housing and Resource Fair

[LINK TO OTHER CAMPUS EVENTS](#)



LEASING TIPS

Know Your Budget

Factor in rent, utilities, groceries, and commuting costs. A clear budget helps you avoid signing a lease you can't comfortably maintain.

Visit Multiple Properties

Compare layouts, amenities, prices, and overall safety. Even if you love the first place you see, checking out a few options helps you make a confident, informed choice.

Plan Your Transportation

Whether you drive, carpool, bike, or hop on the shuttle, check travel times and make a realistic plan to arrive on time.

FOLLOW US ON INSTAGRAM

Keep up with us on social media for events, giveaways, and helpful tips!



@cst_ocss

OFF-CAMPUS RESOURCES

[Off-Campus Student Services](#)

[Niner Choice Program](#)

[Off-Campus Housing Website](#)

DONT FORGET!

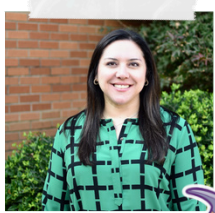
Start your housing search early! Properties will fill fast, and rates often rise as availability decreases. Starting now gives you better options and better pricing.

Start now for the best deals!

WHO'S WHO AT UNC CHARLOTTE

Could you discuss the responsibilities of your position?

"As Associate Director for Student Assistance and Support Services, my role is oversight of case management. I help ensure our services follow a process that is clear and supportive to students who may be experiencing difficulties interfering with their personal life and academics. In SASS, we provide support services such as absence verification and withdrawal assistance, as well as a space for one-on-one meetings to help students create a plan of action and connect with campus resources. We also have several support programs, including the Student Emergency Fund and Short-Term Emergency Housing to help students facing emergency situations."



Katie Russo

Associate Director for Student Assistance and Support Services (SASS)

What are some ways you help off-campus students feel more supported on campus?

"We help students build connections by being a supportive space that listens to each unique experience and tries to help them create a pathway forward to ensure their success as students at Charlotte. We focus on solutions and aid students in finding the right resources to help address their needs. Our office also wants students to understand how to use and directly connect to the campus resources at their fingertips. Our goal is to help students build a supportive network here at Charlotte."