

# INTERN HOUSING 2022

UNC Charlotte  
Housing and Residence Life  
[hrl.charlotte.edu](http://hrl.charlotte.edu)

## WHAT'S INSIDE:

What Should I Bring? | pg 2  
Payments, Amenities, & Parking | pg 3  
Keys & Lockouts | pg 4  
Floor Plans | pg 5  
Policies & Prohibited Items | pg 6  
Dining, Gym, & Mail Services | pg 7  
Light Rail | pg 8  
TV Channel Guide | pg 9  
Campus Map | pg 10

## NEED HELP?

Witherspoon RA on Call: 704-301-8601  
Wallis RA on Call: 704-301-8611

### Residence Education Coordinators

Carlos Gonzalez | [cgonza33@uncc.edu](mailto:cgonza33@uncc.edu)  
Victoria Bost | [vhost@uncc.edu](mailto:vhost@uncc.edu)

### Belk Hall 24hr Desk

704-687-5576

24hr Desk operations begin May 22.  
Call Belk for maintenance requests,  
lockouts, or other questions about  
campus or intern housing.



Photo of Wallis Hall



## CHECK-IN, CHECK-OUT AND RESOURCES

Intern Housing is open Sun, May 22 — Sat, August 6 - unless you have been approved for late stay. Please review your individual arrival and departure dates as they will vary. Interns will be housed in Wallis and Witherspoon Hall.

### Check-In:

Check-in is at Belk Hall (562 on map). You are encouraged to arrive between 9am-9pm.

### Email

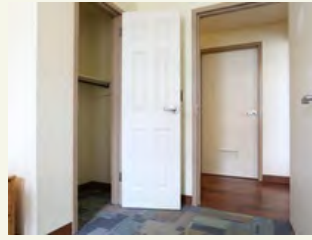
[hrlconferences@uncc.edu](mailto:hrlconferences@uncc.edu) if you plan to arrive outside of these hours. Please note Belk Hall is not where you will be staying.

### Check-out:

You are expected to be completely moved out of your room and check-out by the departure date you selected on your housing application.

The final Intern Housing check-out date is no later than Sat, August 6 at 12pm when the program closes.

Photos on this page are of Wallis Hall apartments. Photos of Witherspoon Hall apartments can be found at [housing.charlotte.edu/housing-options/buildings/witherspoon-hall](https://housing.charlotte.edu/housing-options/buildings/witherspoon-hall)



# WHAT SHOULD I BRING TO CAMPUS?



- **Electronics:** desktop or laptop computers, TVs, etc.
  - WiFi: Network is **SummerGuest-WiFi** network. The password is **summer2022** (all lowercase).
  - If you plan to use wired internet, you'll need to bring a RJ-45 Ethernet cable.
  - Wireless routers are not needed and discouraged.
  - Speakers are allowed unless causing a noise violation. Headphones are encouraged.
- **Toiletries:** shampoo, soap, toothbrush, personal grooming tools, etc.
- **Bed and bath linens\***
- **Cleaning supplies:** laundry detergent, kitchen/bathroom cleaning products, etc.
- **Household Items:** hangers, iron, vacuum, dishes/utensils, fans, etc.
- ALL bedrooms lock, but you may bring a lockable security container to store valuables.
- Power strips with fuses/circuit breaker (no unfused multi-plug outlet adapter or multi-plug extension cords).

\*Mattresses are Twin XL and 80" in length. Check dimensions on linen packaging. Mattress pads are encouraged for comfortability and to prevent stains/damage to the mattress.



# PAYMENTS AND AMENITIES

After receiving your invoice for your stay, you may pay the entire balance at once or make regular payments on your own schedule.

**However, your balance must be paid off by July 15 (or your checkout date).**

Payments can be submitted online through your application.

Rates are inclusive, covering all costs for room rent, utilities, laundry, cable TV, and internet.

*Parking permits, gym memberships, and meal plans are not included.*



## PARKING ON CAMPUS

Disclaimer:

Parking permits are required to park on campus. HRL and the Summer Intern Housing Program DO NOT determine permit prices, coordinate the purchase of, or collect/receive any funds intended for purchasing parking permits. Transactions related to the purchase of permits occurs directly between the intern and Parking and Transportation Services (PaTS). The University is not responsible for any theft/damage to vehicles.

Important license plate requirement:

- PaTS uses license plate recognition technology to verify permits.
- You CANNOT back into parking spaces unless you have a vehicle with license plates on the front AND back.
- Backing into spaces without a front license plate will result in a parking ticket.

More details about parking and permit options are available here:

[pats.charlotte.edu/parking/parking-permits/summer-permits](https://pats.charlotte.edu/parking/parking-permits/summer-permits)

When you move-in, you may want to park temporarily while unloading. Contact PaTS if you need to temporarily park in loading zones. The call center is staffed continuously from 5am Mon - 10pm Fri.

PaTS Call Center: 704-687-0161



### TO PURCHASE A RESIDENT PARKING PERMIT:

Online— Residential Parking Permits may be purchased with your NinerNet credentials at [pats.charlotte.edu](https://pats.charlotte.edu).

*Interns with Lowes and Vanguard will have a different process, please look out for more information specific to these groups.*

Summer permit rates are as follows:

- Purchased in May \$144
- Purchased in June \$96
- Purchased in July \$48

# LOCKED OUT? LOST YOUR KEYS?

Go to the Belk Hall 24hr Desk  
704-687-5576

Belk is your main resource for all things keys.



## Are you having trouble with your keys?



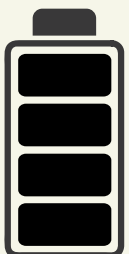
Your key has a frowning face.

Indicates incorrect room,  
damaged key, or the key got wet.

Go to the Belk Loan Key Desk

Your key has a smiley face,  
but the door does not open.

Indicates it is the correct door.  
Try again and pause between  
smile and turning key.



Battery is flashing - it is okay.  
It is just a warning that the  
battery might be running low.

If the key is completely blank,  
go to Belk Loan Key Desk

- You will be issued two keys:
  - A battery operated key with a smiley face on it that will get you into to the front door of your apartment/suite.
    - Never temper with the keys or remove the batteries yourself.
    - Removing the batteries will result in your key needing to be reprogrammed, and may result in you being charged for a replacement key.
  - A traditional metal key that will get you into your individual bedroom within the apartment/suite. This key only works to your individual bed space.
- Your UNC Charlotte ID card or a temporary building access card will be used to gain entrance into the building.
- If you are locked out, go to the Belk Desk to be issued a temporary loan key.
  - You will be loaned a temporary key and will need to return it once you get back into your space.
  - When you return the temporary key to desk staff, you must present your permanent keys to them.
  - You will typically have 4 hours to return the key unless the desk staff tells you otherwise.
    - Exceptions to timeframes will be given on a case by case basis.
    - Please communicate your situation with the Belk desk staff so they can find the best option for you.
  - Temp keys cost \$5 each time and it will be billed to your Iris Intern Application account. Failure to return them you may result in you being charged for a lock change.
- If you lose your keys, you must notify us immediately. University policy requires an immediate lock change for the safety of all residents.
  - You may be billed up to \$120 if lock changes are performed.

# FLOOR PLANS

WITHERSPOON HALL APARTMENT  
4 PERSON/4 BED



WALLIS HALL APARTMENT  
4 PERSON/4 BED



- Witherspoon apartments have 2 full bathrooms.
- Wallis apartments have 1.5 bathrooms.
- All furniture is included.
- Bed spaces are ordered A - D, or 1 - 4.
- Laundry rooms are available at no cost.
- Communal kitchens are located within the buildings for individuals living in suites without kitchens.
- Specific details about each room type can be found by selecting the hall you are assigned to on our website here: [housing.charlotte.edu/housing-options/find-your-home](https://housing.charlotte.edu/housing-options/find-your-home)

WALLIS HALL SUITE 2 PERSON/2 BED







# IMPORTANT POLICIES

Interns are expected to follow University and HRL policies available [online](#). However, the following violations may result in an intern's immediate removal from housing:

- Possessing firearms anywhere in the residential area. Intentionally setting a fire, intentionally causing any false fire alarms, vandalizing or tampering with any fire alarm or fire protection equipment, violating requirements concerning the use of certain electrical equipment and/or appliances.
- Intentionally standing, sitting or walking on window ledges or balcony railings; intentionally placing objects on the window ledges or balcony railings that might fall and injure someone below.
- Abusing or misusing elevator equipment.
- Intentionally throwing or dropping objects from windows or balconies in any residence hall, suite or apartment.
- Intentionally passing any part of the body through the window; intentionally climbing in or out of any window for the purpose of entering or exiting a room.
- Possession or use of any controlled substance identified in Schedule I and II (N.C. General Statutes 90-89 or 90-90).
- Possessing, storing, and/or using ammunition, gasoline, kerosene, similar combustible materials, and/or any explosives anywhere in the residential area.

## PROHIBITED ITEMS IN ALL AREAS:

- Appliances capable of heating grease/oil to a burning point (deep fryers, popcorn machines, etc.)
- Aquariums with tanks over 10 gallons
- Candles/incense
- Cats, dogs, and other non-fish pets except for approved ESAs, Service Animals)
- Ceiling tapestries
- Additional door locks (chain or deadbolt)
- Flammable items
- Halogen lamps/bulbs
- LED light strips with adhesive
- Loft beds
- Multi-plug extension cords without a fuse
- Multi-plug wall outlets without a fuse
- Non-UL approved devices
- Oil burning lamps
- Antennas
- Personal wireless internet routers
- Space heaters
- Weapons as defined by University Policy 702
- Open coil burners/hot plates
- Transportation devices with Lithium Ion Batteries (hoverboards, skateboards, scooters, etc.) unless the device is approved through The Office of Disability
- 3D Printers/laminators

## Items Prohibited Outside Apartment Kitchens (permitted ONLY in apartment kitchens):

- Electric woks, griddle/grill
- Hot Air Cookers, including air fryers
- Indoor grills (George Foreman-type)
- Regular toaster
- Stovetop tea kettles
- Instant Pots/Pressure Cooker/Rice Cooker
- Toaster oven

# CAMPUS RESOURCES

## DINING SERVICES:

Crown Commons, located in the Popp Martin Student Union (#69 on map) will be the dining hall available on campus summer 2022. Various retail options are available on campus.

For up to date options and dining hours by location, visit [aux.charlotte.edu](http://aux.charlotte.edu)

## GYM MEMBERSHIP:

Gym memberships are \$25/summer session.

You may purchase a campus gym membership by contacting the University Recreation at 704-687-0430 or [u-rec@uncc.edu](mailto:u-rec@uncc.edu)



## MAIL AND PACKAGE SERVICES:

You will receive an email notification that mail has been delivered to your UNC Charlotte email address. Follow the instructions provided in that email to determine how to pick up your package.

Mail and packages will be picked up and delivered on the lower level of the Prospector building. No mail or packages will be delivered to the residence halls.

[mailservices@uncc.edu](mailto:mailservices@uncc.edu) | 704-687-0383  
[aux.charlotte.edu/mail-package/mail-package-services](http://aux.charlotte.edu/mail-package/mail-package-services)

Your Address:

Name  
 9201 University City Blvd.  
 Wallis or Witherspoon Hall Room XXX  
 Charlotte, NC 28223

*How to address mail to a residence hall student:*

• Student Name (no nicknames) • Room number and Residence Hall • UNC Charlotte street address	}	Norma Niner 1946 Founders Lane Hometown, NC 28000	
		Norm Niner 49 Residence Hall 9201 University City Blvd. Charlotte, NC 28223	





# LIGHT RAIL BLUE LINE EXTENSION

CATS Transit all-access passes are available for purchase for \$50 from UNC Charlotte's Parking and Transportation Services (PaTS).

Passes may be purchased with your NinerNet credentials at [uncc.nupark.com](http://uncc.nupark.com) or by calling the PaTS office at 704-687-0161.

Your UNC Charlotte ID or a valid individual ticket must be presented pass when asked by CATS officials on the trains.





# CHANNEL GUIDE

Our cable television provider, Apogee, offers on-campus residents more than 100 channels of digital TV. Enjoy!

WBTB-DT	3.1	USA Network HD	40.2	CNN HD	57.1
WBTB-DT2	3.2	BET HD	41.1	MSNBC HD	57.2
Residence Life Channel	4.1	TruTV HD	41.2	Fox News Channel HD	58.1
WSOC-DT	9.1	WTVI-DT	42.1	Fox Business Network HD	58.2
WSOC-DT2	9.2	WTVI-DT2	42.2	CNBC HD	59.1
Showtime (East) HD	10.1	WTVI-DT3	42.3	Bloomberg Television HD	59.2
Showtime Extreme	10.2	FX HD	43.1	HITN TV	60.1
The Movie Channel (East)	11.1	FXX HD	43.2	ION	60.2
FLIX	11.2	MTV HD	44.1	TBN	61.1
Starz Encore (East) HD	12.1	MTV2	44.2	Christian TV Network	61.2
Starz Encore Action	12.2	VH1 HD	45.1	CSPAN1	62.1
Starz Encore Black	13.1	Fuse HD	45.2	Link TV	62.2
Starz Encore Classic	13.2	WJZY-DT	46.1	Free Speech	63.1
WCCB-DT	18.1	WJZY-DT3	46.3	Pursuit Channel	63.2
WCCB-DT2	18.2	WJZY-DT4	46.4	TV Land	64.1
WCCB-DT3	18.3	WJZY-DT5	46.5	Animal Planet HD	64.2
ESPN HD	31.1	WJZY-DT6	46.6	E! Entertainment HD	65.1
ESPN2 HD	31.2	WJZY-DT7	46.7	Comedy Central HD	65.2
ESPNNews HD	32.1	AXS TV HD	47.1	Cartoon Network HD	66.1
ESPNU HD	32.2	CMT HD	47.2	Disney XD	66.2
Fox Sports 1 HD	33.1	Motor Trend Network HD	48.1	Disney Channel HD	67.1
Fox Sports 2 HD	33.2	The Weather Channel HD	48.2	Disney Jr.	67.2
ACC Network HD	34.1	UNCC TV	49.1	Nickelodeon HD	68.1
Investigation Discovery	34.2	OWN HD	50.1	NickToons	68.2
CBS Sports Network HD	35.1	Oxygen	50.2	TeenNick	69.1
Golf Channel HD	35.2	Bravo HD	51.1	Nick Jr.	69.2
WCNC-DT	36.1	HGTV HD	51.2	Freeform HD	70.1
WCNC-DT2	36.2	Food Network HD	52.1	POP HD	70.2
WCNC-DT3	36.3	Cooking Channel HD	52.2	Hallmark Channel HD	71.1
WCNC-DT4	36.4	Syfy Channel HD	53.1	Hallmark Movies & Mysteries HD	71.2
NFL Network HD	37.1	BBC America HD	53.2	Paramount Network HD	72.1
NBA TV HD	37.2	Travel Channel HD	54.1	ReelzChannel HD	72.2
NHL Network HD	38.1	TLC HD	54.2	IFC HD	73.1
MLB Network HD	38.2	National Geographic HD	55.1	AMC HD	73.2
TBS HD	39.1	Discovery Channel HD	55.2	Lifetime HD	74.1
TNT HD	39.2	History Channel HD	56.1	WE TV HD	74.2
A&E HD	40.1	HLN HD	56.2		

To report or troubleshoot any cable television related service issues, call the Apogee Support Team at **855.465.6729**.





Access the  
Interactive  
Campus Map

### Academic Buildings

1	Adams	2	Adams
3	Adams	4	Adams
5	Adams	6	Adams
7	Adams	8	Adams
9	Adams	10	Adams
11	Adams	12	Adams
13	Adams	14	Adams
15	Adams	16	Adams
17	Adams	18	Adams
19	Adams	20	Adams
21	Adams	22	Adams
23	Adams	24	Adams
25	Adams	26	Adams
27	Adams	28	Adams
29	Adams	30	Adams
31	Adams	32	Adams
33	Adams	34	Adams
35	Adams	36	Adams
37	Adams	38	Adams
39	Adams	40	Adams
41	Adams	42	Adams
43	Adams	44	Adams
45	Adams	46	Adams
47	Adams	48	Adams
49	Adams	50	Adams
51	Adams	52	Adams
53	Adams	54	Adams
55	Adams	56	Adams
57	Adams	58	Adams
59	Adams	60	Adams
61	Adams	62	Adams
63	Adams	64	Adams
65	Adams	66	Adams
67	Adams	68	Adams
69	Adams	70	Adams
71	Adams	72	Adams
73	Adams	74	Adams
75	Adams	76	Adams
77	Adams	78	Adams
79	Adams	80	Adams
81	Adams	82	Adams
83	Adams	84	Adams
85	Adams	86	Adams
87	Adams	88	Adams
89	Adams	90	Adams
91	Adams	92	Adams
93	Adams	94	Adams
95	Adams	96	Adams
97	Adams	98	Adams
99	Adams	100	Adams

Campus Housing	
542	Adams Hall
543	Adams Hall
544	Adams Hall
545	Adams Hall
546	Adams Hall
547	Adams Hall
548	Adams Hall
549	Adams Hall
550	Adams Hall
551	Adams Hall
552	Adams Hall
553	Adams Hall
554	Adams Hall
555	Adams Hall
556	Adams Hall
557	Adams Hall
558	Adams Hall
559	Adams Hall
560	Adams Hall
561	Adams Hall
562	Adams Hall
563	Adams Hall
564	Adams Hall
565	Adams Hall
566	Adams Hall
567	Adams Hall
568	Adams Hall
569	Adams Hall
570	Adams Hall
571	Adams Hall
572	Adams Hall
573	Adams Hall
574	Adams Hall
575	Adams Hall
576	Adams Hall
577	Adams Hall
578	Adams Hall
579	Adams Hall
580	Adams Hall
581	Adams Hall
582	Adams Hall
583	Adams Hall
584	Adams Hall
585	Adams Hall
586	Adams Hall
587	Adams Hall
588	Adams Hall
589	Adams Hall
590	Adams Hall
591	Adams Hall
592	Adams Hall
593	Adams Hall
594	Adams Hall
595	Adams Hall
596	Adams Hall
597	Adams Hall
598	Adams Hall
599	Adams Hall
600	Adams Hall

Parking Areas	
Faculty & Staff	Visitor
100-109	100-109
110-119	110-119
120-129	120-129
130-139	130-139
140-149	140-149
150-159	150-159
160-169	160-169
170-179	170-179
180-189	180-189
190-199	190-199
200-209	200-209
210-219	210-219
220-229	220-229
230-239	230-239
240-249	240-249
250-259	250-259
260-269	260-269
270-279	270-279
280-289	280-289
290-299	290-299
300-309	300-309
310-319	310-319
320-329	320-329
330-339	330-339
340-349	340-349
350-359	350-359
360-369	360-369
370-379	370-379
380-389	380-389
390-399	390-399
400-409	400-409
410-419	410-419
420-429	420-429
430-439	430-439
440-449	440-449
450-459	450-459
460-469	460-469
470-479	470-479
480-489	480-489
490-499	490-499
500-509	500-509
510-519	510-519
520-529	520-529
530-539	530-539
540-549	540-549
550-559	550-559
560-569	560-569
570-579	570-579
580-589	580-589
590-599	590-599
600-609	600-609
610-619	610-619
620-629	620-629
630-639	630-639
640-649	640-649
650-659	650-659
660-669	660-669
670-679	670-679
680-689	680-689
690-699	690-699
700-709	700-709
710-719	710-719
720-729	720-729
730-739	730-739
740-749	740-749
750-759	750-759
760-769	760-769
770-779	770-779
780-789	780-789
790-799	790-799
800-809	800-809
810-819	810-819
820-829	820-829
830-839	830-839
840-849	840-849
850-859	850-859
860-869	860-869
870-879	870-879
880-889	880-889
890-899	890-899
900-909	900-909
910-919	910-919
920-929	920-929
930-939	930-939
940-949	940-949
950-959	950-959
960-969	960-969
970-979	970-979
980-989	980-989
990-999	990-999

### Services - Places of Interest

Services - Places of Interest	
100	Adams Hall
101	Adams Hall
102	Adams Hall
103	Adams Hall
104	Adams Hall
105	Adams Hall
106	Adams Hall
107	Adams Hall
108	Adams Hall
109	Adams Hall
110	Adams Hall
111	Adams Hall
112	Adams Hall
113	Adams Hall
114	Adams Hall
115	Adams Hall
116	Adams Hall
117	Adams Hall
118	Adams Hall
119	Adams Hall
120	Adams Hall
121	Adams Hall
122	Adams Hall
123	Adams Hall
124	Adams Hall
125	Adams Hall
126	Adams Hall
127	Adams Hall
128	Adams Hall
129	Adams Hall
130	Adams Hall
131	Adams Hall
132	Adams Hall
133	Adams Hall
134	Adams Hall
135	Adams Hall
136	Adams Hall
137	Adams Hall
138	Adams Hall
139	Adams Hall
140	Adams Hall
141	Adams Hall
142	Adams Hall
143	Adams Hall
144	Adams Hall
145	Adams Hall
146	Adams Hall
147	Adams Hall
148	Adams Hall
149	Adams Hall
150	Adams Hall
151	Adams Hall
152	Adams Hall
153	Adams Hall
154	Adams Hall
155	Adams Hall
156	Adams Hall
157	Adams Hall
158	Adams Hall
159	Adams Hall
160	Adams Hall
161	Adams Hall
162	Adams Hall
163	Adams Hall
164	Adams Hall
165	Adams Hall
166	Adams Hall
167	Adams Hall
168	Adams Hall
169	Adams Hall
170	Adams Hall
171	Adams Hall
172	Adams Hall
173	Adams Hall
174	Adams Hall
175	Adams Hall
176	Adams Hall
177	Adams Hall
178	Adams Hall
179	Adams Hall
180	Adams Hall
181	Adams Hall
182	Adams Hall
183	Adams Hall
184	Adams Hall
185	Adams Hall
186	Adams Hall
187	Adams Hall
188	Adams Hall
189	Adams Hall
190	Adams Hall
191	Adams Hall
192	Adams Hall
193	Adams Hall
194	Adams Hall
195	Adams Hall
196	Adams Hall
197	Adams Hall
198	Adams Hall
199	Adams Hall
200	Adams Hall

2,000 Feet

1,000

500

0

0

0

0

0

0

0

0